

CUTTING EDGE TECHNOLOGY

POWELL CNC

SALES & SERVICE



POWELL H1600 FLATBED UV PRINTER

WWW.POWELL-CNC.COM

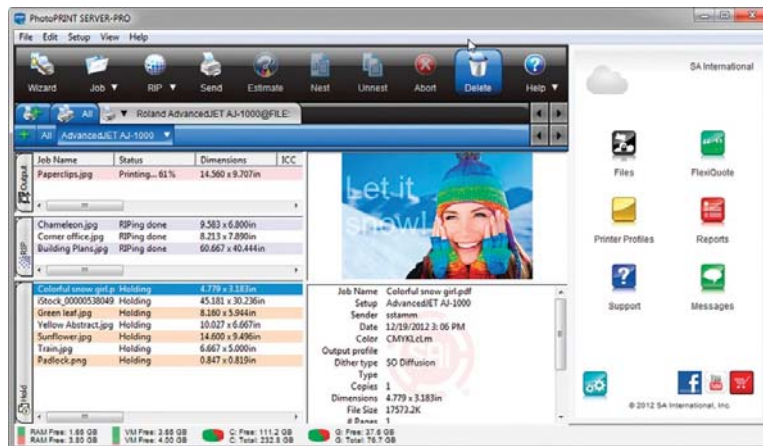
POWELL CNC

SALES & SERVICE

KYOCERA KJ4A 3,5pL PRINT HEAD



SAI PHOTO PRINT INTERFACE



FEATURES

- Kyocera KJ4A 3,5pL
- 7pl-21pl variable ink droplet printing
- 2pt typeface can be clearly printed
- Dual precision ballscrew transmission
- SAI Photo Print RIP Software
- Print speeds up to 60²m hour
- Colour Options C M Y K Lc Lm W (optional)
- CE Mark certified machine
- Widely available spare parts
- Compatible with virtually any design software, Photoshop, Illustrator, InDesign etc
- Rigid media up to 100mm
- Automatic media thickness detection
- Zoned vacuum table for media hold down
- Lenovo workstation onboard for compact design
- 12 month warranty (excluding Print heads)

POWELL CNC

SALES & SERVICE



DESCRIPTION

The H1600 is particularly tailored for small and medium processing enterprises to meet their requirement of high speed and ultra precision production. Configured with Kyocera KJ4A 3,5pL print heads, our flatbed LED UV printer can accomplish high speed printing with ultra precision in 6 colours and up to 604x1800 dpi. Having the production speed up to 60m²/h (2 print heads rows), our flatbed printer is capable of meeting the needs of high volume production.

The H1600 LED UV flatbed printer is capable of 24/7 production and can be easily operated by one operator. The transmission is by dual precision ground ballscrew, maintaining a repeated accuracy of 0.02 x 0.02mm over the working area.

The UV flatbed printer also has the optional mode of white ink to further enhance the quality and multi-functionality of the H1600.

POWELL CNC

SALES & SERVICE

DIRECT TO PARTS



DIRECT TO BOARD



APPLICATIONS

- Exhibition Display
- Promotional items
- Organic materials such as wood & textiles
- Machine dials
- Printing on foamed panels
- Printing on re-board honeycomb
- Printing on Self adhesive and one way vinyl
- Direct to garment
- Printing white on black items
- Display and POS solutions
- Direct to substrate printing
- Reverse printing for lightbox
- Safety and site signage

POWELL CNC

SALES & SERVICE



STANDARD CONFIGURATION

- H1600 Printer
- 2 x Kyocera KJ4A 3,5pL print head
- PC, monitor, keyboard and mouse
- 2 x Standard LEDUV lamps (600hrs)
- High precision ball screw drive system
- Zoned vacuum table (reversible)
- Media height up to 100mm with autodetect
- High speed shuttle printing
- SAI Photoprint RIP Software
- Media location pins
- Bulk ink delivery system
- Delivery (not unloading, mainland UK only)
- Training
- 12 month warranty (excluding print heads)

SPECIFICATION

MODEL	H1600		
TRAVELLING AREA	KYOCERA KJ4A 3,5pL		
QTY PRINT HEADS	2-8 HEADS		
RESOLUTION	604 * 1800 DPI		
PRINT MODE	UNI DIRECTIONAL & BIDIRECTIONAL		
PRINT SPEED	PRODUCTION	QUALITY	HIGH-QUALITY
	60 m2/hr (2 Rows)	41 m2/hr	30 m2/hr
MAX MEDIA WIDTH	2440 x 1220mm		
MAX MEDIA HEIGHT	100mm (can be raised up to 200mm. with optional adapter)		
MEDIA TYPE	RIGID AND FLEXIBLE FLAT MATERIALS		
INK	ENVIRONMENTALLY FRIENDLY UV CURABLE INKS (VOC FREE)		
INK COLOUR	C, M, Y, K, Lc, LM, W (OPTIONAL)		
IMAGE FORMAT	ADOBE POSTSCRIPT LEVEL 3, PDF, JPEG, TIFF, EPS, AI		
MACHINE SIZE	4.82M x 2.16M x 1.48M		
POWER CONSUMP.	8.3KW (20A)		
POWER SUPPLY	30A SINGLE PHASE		
CERTIFICATION	CE, FCC		
RIP SUPPORT	PHOTO PRINT (ONYX, CALDERA, OPTIONAL)		
UV CURING	UV LED(WATER COOLING)		
INTERFACE	HIGH SPEED USB		
ENVIRONMENT	SEPARATE WORKROOM, CLEAN, WELL VENTILATED, AVOID DIRECT SUNLIGHT, TEMP 18-30 HUMID 30-70%		